



GIRIVA INDUSTRIES



+91 97140 10082



girivapl@gmail.com



312, Notus IT Park, Sarabhai Amin Marg, Genda Circle Vadodara - 390007



www.girivaind.com

HDPE Composite Membrane

INNOVATIVE SUSTAINABLE
GREEN PRODUCTS



WHAT IS HDPE Composite Membrane ?



HDPE Composite membrane is made up of thermally bonded three layers. Top & bottom with specially manufacture fibrous non-woven fabric with central layer impervious flexible composite plastic.

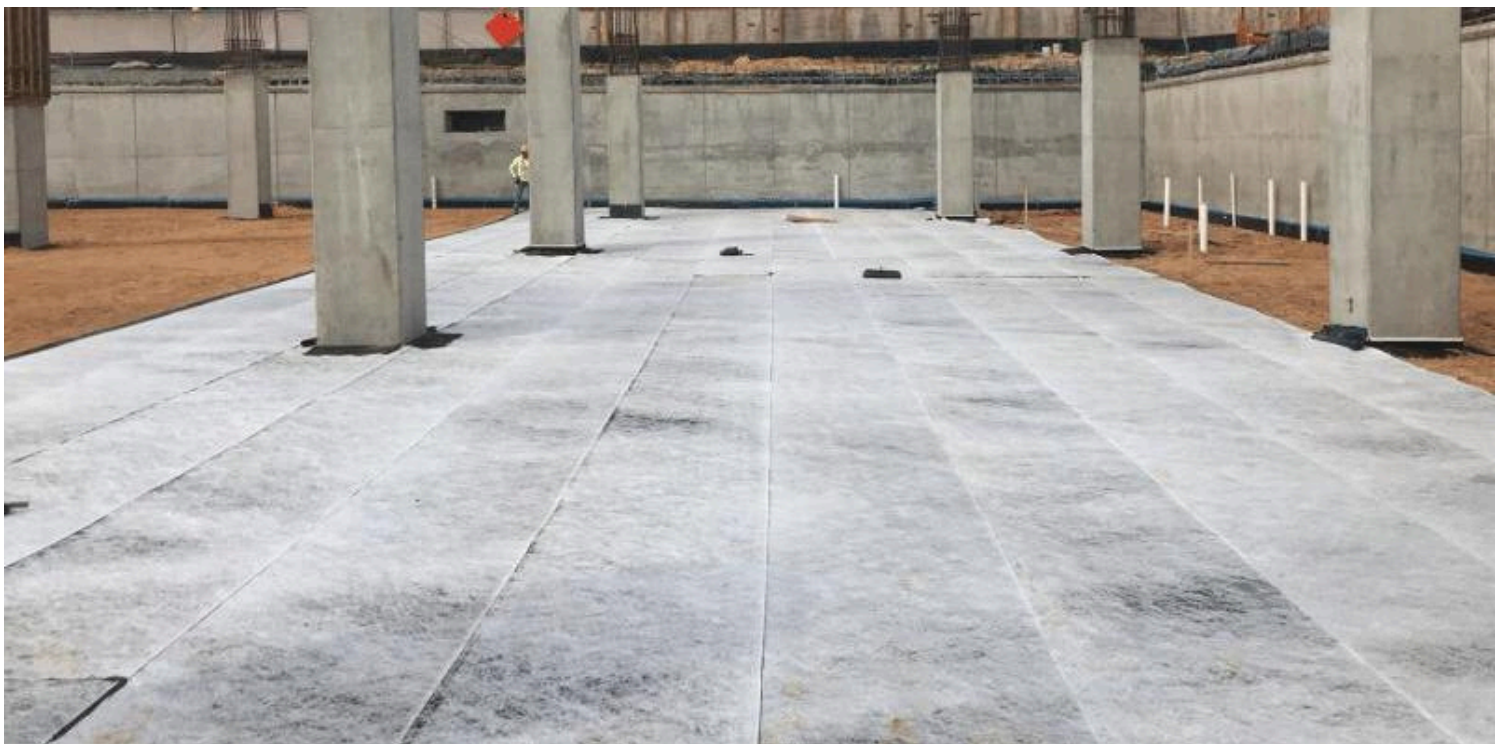
It is innovative multi-application waterproofing membrane it is one product use for all waterproofing application.



It is very simple for applying just in three steps, surface cleaning, apply cement base title adhesive and lay the membrane over the adhesive. It is a three layered flexible composite plastic waterproofing applications. Effective and viable, the low cost waterproofing internal, external and large as well as small areas.

PRODUCT SPECIFICATION

- Thickness: 1.00 mm
- Width: 1.8 m.
- Roll Length: 20 m
- Material: Innovative Composite Plastic



APPLICATION

- Roof Terraces Waterproofing
- Podium Slabs Waterproofing
- Water Body Waterproofing
- Toilets Waterproofing
- Swimming Pools waterproofing
- External Walls Waterproofing
- Wall Damp Proofing
- Many More



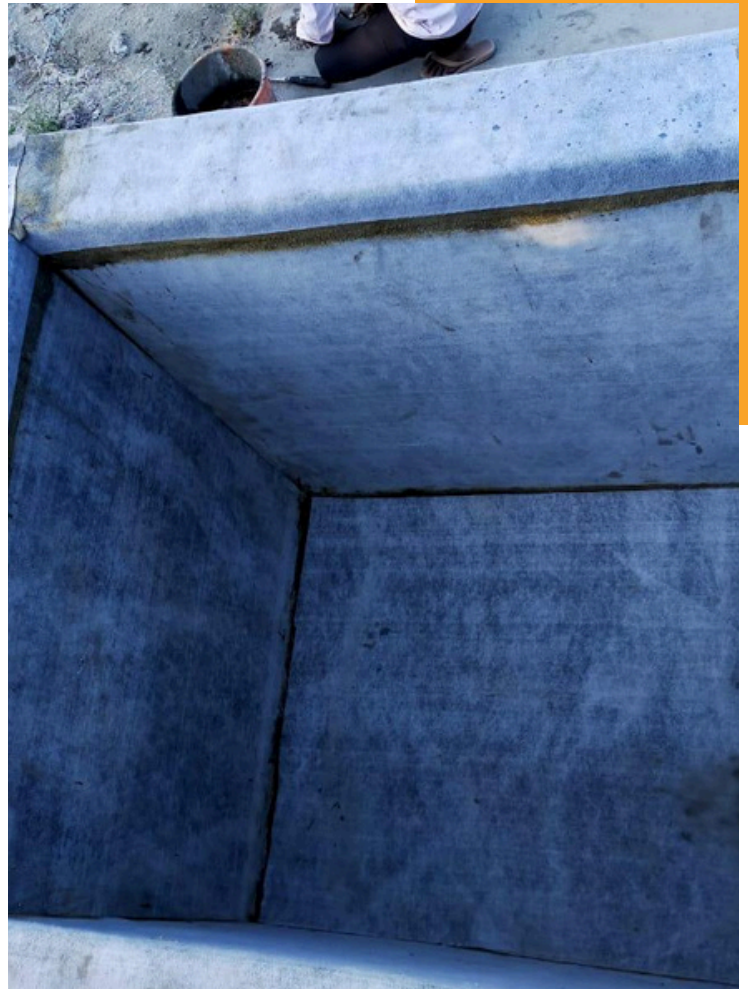
ADVANTAGES

- 100% waterproofing assured
- Easy and very fast application
- Time and cost saving application
- Highly versatile and durable material
- Long length sheets for easy application and storage
- Simple pasting using good quality cement-based tile adhesive
- Resistant to underground gases & salts
- Comfortable application by semi-skilled workers

APPLICATIONS PROCESS

Simple 3 steps application process.

- 1) Clean the surface using jet water spray machine.
- 2) Apply the cement base tile adhesive paste 3mm thick over the all surface area using notched combed blade. (Make sure surface is well saturated before apply tile adhesive).
- 3) Lay and fix the membrane properly and press it well with wooden float or roller to make sure no air between the membrane. Overlap the membrane 100 mm each other using tile adhesive and compact it well. After completion of application fixed the tiles or concrete screed can be done over the membrane for additional protection.



COUNT ON GIRIVA TO COVER YOU



TECHNICAL DATA SHEET

PROPERTIES	TEST METHOD	UNIT	TEST VALUE
Specific Gravity	IS 15351-2015	g/cm ³	1 ± 0.05
Typical Weight (Thk-1.20 mm)	IS 15351-2015	kg/m ²	1.500 ± 0.05
Tensile Strength	IS 5147	kg/m ²	> 200
Elongation at Break	IS 5147	%	> 125
Puncture Resistance	IS 15351-2015	N	> 300
Tear Resistance	IS 15351-2015	N	> 100
Resistance to Water Pressure	IS 15351-2015	kg/cm ²	> 10
Peel Adhesion to concrete	IS 15351-2015	N	> 1200
Overlap Peel Adhesion Strength (Cement Base Tile Adhesive)	IS 15351-2015	N	> 1000
Overlap Peel Adhesion Strength (PU 2K/Yellow Super Bond Adhesive)	IS 15351-2015	N	>1500
Water Absorption	---	%	<5



Thank You!

GIRIVA GROUP OF COMPANIES

312, Notus IT Park, Sarabhai
Amin Marg, Genda Circle
Vadodara - 390007

IMPORTANT NOTE: As these products are manufacturing from second generation composite plastics. All these test parameters may vary.

NOTE: The HCM membrane is itself water impermeable. However, the effectiveness of waterproofing is solely depends upon the site condition and effective workmanship of application.

STORAGE CONDITIONS: The membranes must be vertically stacked and stored in a shaded area covered by a thick fabric and tied securely in a manner that will minimize exposure to sunlight. The membranes to be stored in dry conditions below +40°C temperatures.