



GIRIVA INDUSTRIES



+91 97140 10082



girivapl@gmail.com



312, Notus IT Park, Sarabhai
Amin Marg, Genda Circle
Vadodara - 390007



www.girivaind.com

ANCHOR GRIP BASEMENT WATERPROOFING MEMBRANE

INNOVATIVE SUSTAINABLE
GREEN PRODUCTS



WHAT IS ANCHOR GRIP ?



Anchor Grip an innovative composite plastic waterproofing membrane is made up of flexible composite plastic sheet with closely spaced Lshaped anchor ribs along with square grid design for locking extensions, which firmly anchor the membrane with concrete surface during casting of concrete leaving no gap for water penetration.

Anchor Grip waterproofing membrane is an innovative design, very efficient, easy and fast application for basement waterproofing. It is simple to apply and comfortable application by semi-skilled workers with given little training. It is sustainable green building products.

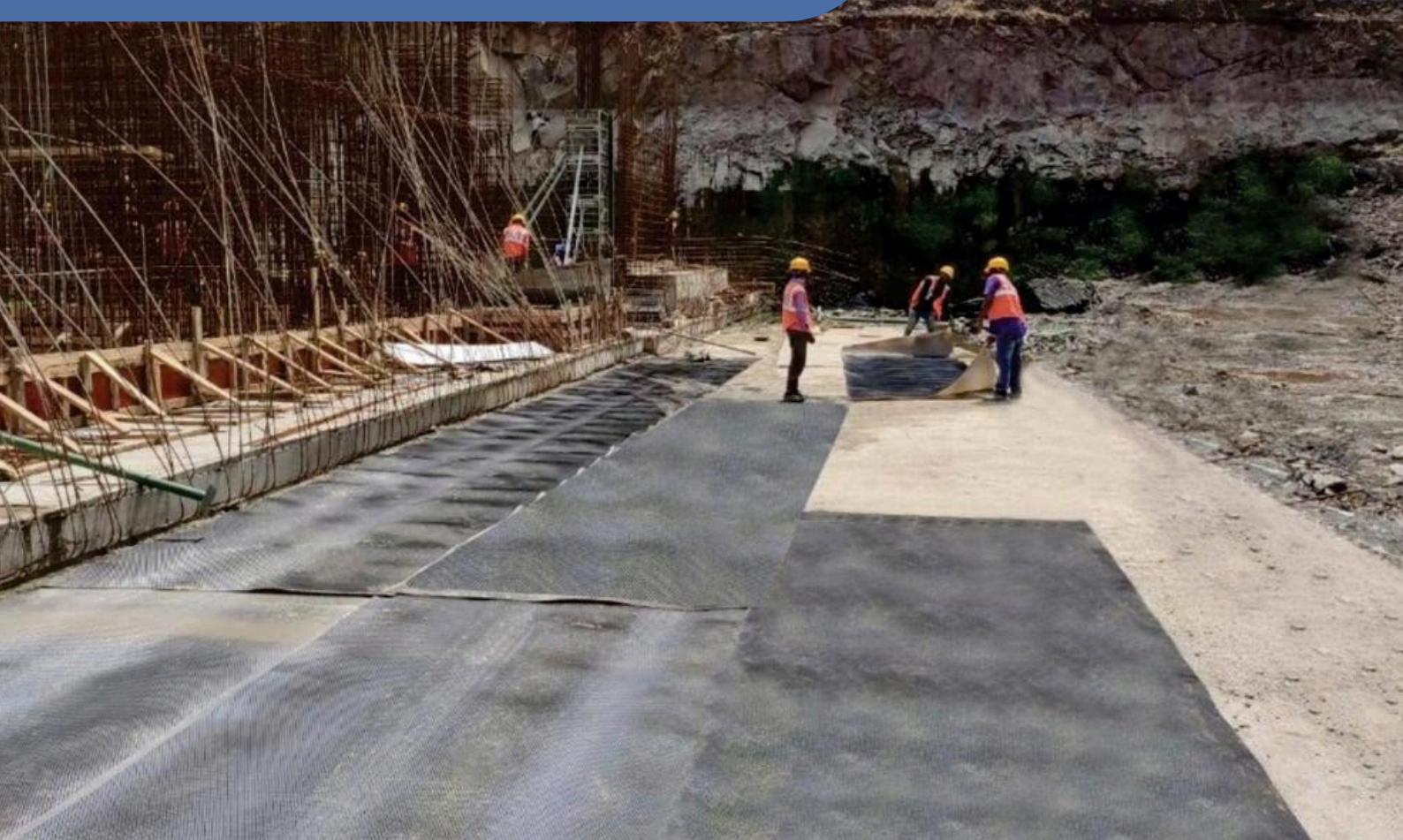
PRODUCT SPECIFICATION

- Thickness: 1.00 mm
- Width: 1.8 m.
- Roll Length: 20 m
- Material: Innovative Composite Plastic



APPLICATION

- Basements Waterproofing
- Retaining Walls Waterproofing
- Water Storage Tanks Waterproofing
- Sewerage Treatment Tanks Waterproofing
- RCC Pipe Lining Waterproofing



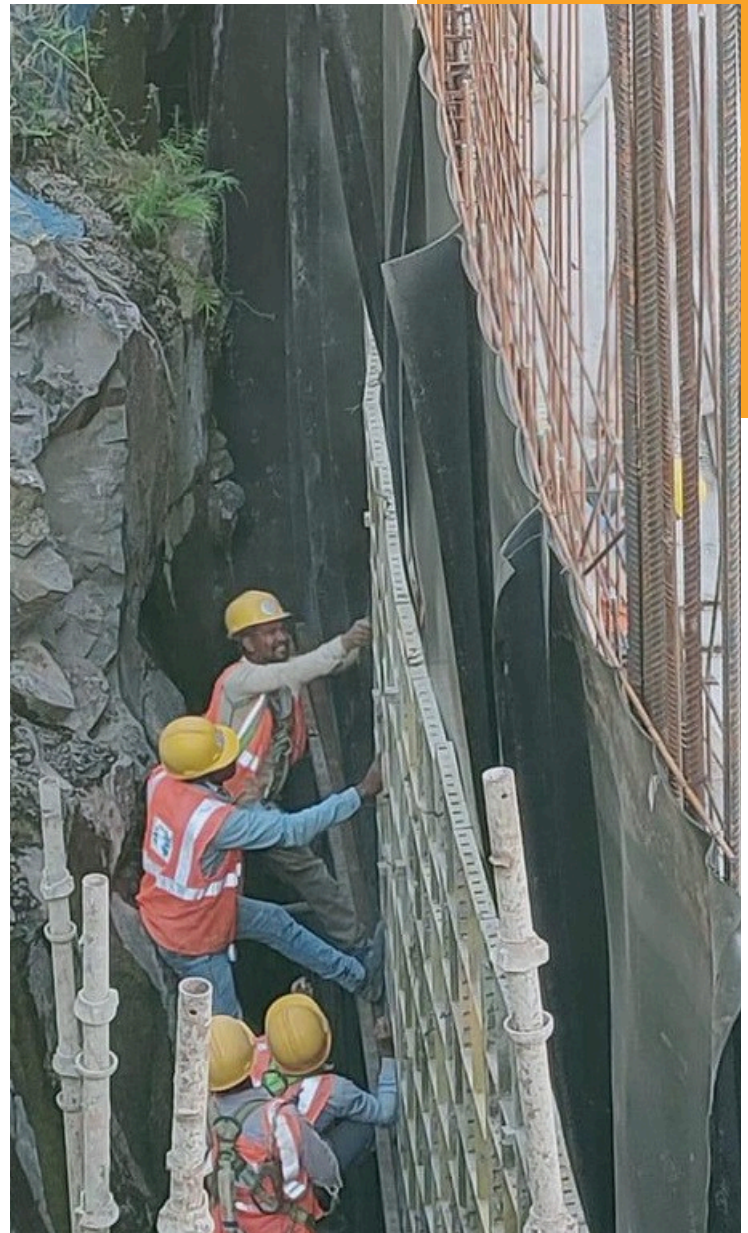
ADVANTAGES

- 100% waterproofing assured
- Easy and very fast application
- Time and cost saving application
- Highly versatile and durable material
- Long length sheets for easy application and storage
- Simple pasting using good quality cement-based tile adhesive
- Resistant to underground gases & salts
- Comfortable application by semi-skilled workers

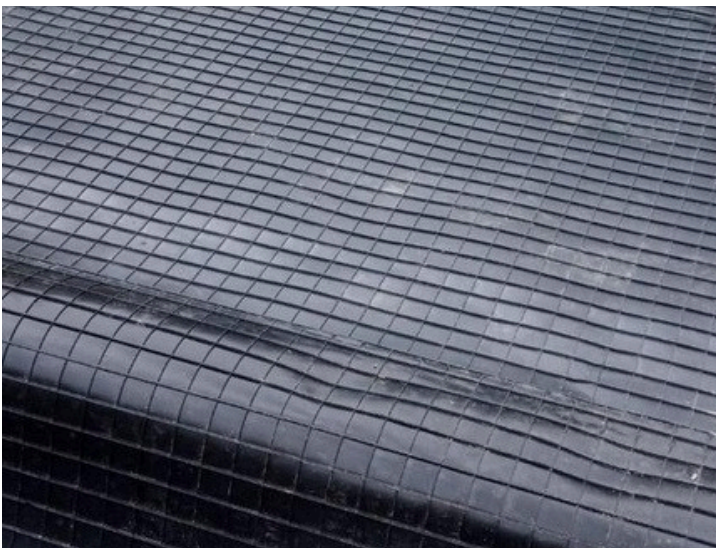
APPLICATIONS PROCESS

Simple 3 steps application process.

- 1) **SPREAD** – Unroll the membrane roll over the PCC with proper alignments and folds the membrane at the edge of raft using hot air gun if required.
- 2) **JOIN** – Join and bond two membranes together using double sided adhesive tape supplied by Greentek Plast with 100 mm overlap and press well with steel roller. For 3 side corner use corner molded membrane supplied by Greentek Plast and join with adhesive tape. Join all horizontal / vertical join with 100 mm overlap using adhesive tape.
- 3) **CAST** – Place and fix the reinforcement and cast the raft slab / retaining wall carefully. For retaining wall – Fix the outer side formwork and place the membrane with support of shuttering to join together with 100 mm overlap and place the reinforcement and fix the internal formwork and cast the wall with concrete. Fill the tie rod holes with concrete grout and patch up the membrane hole or any damages surface using plain membrane.



COUNT ON GIRIVA TO COVER YOU



TECHNICAL DATA SHEET

PROPERTIES	TEST METHOD	UNIT	TEST VALUE
Specific Gravity	IS 15351-2015	g/cm ³	1 ± 0.05
Typical Weight (Thk-1.20 mm)	IS 15351-2015	kg/m ²	1.500 ± 0.05
Tensile Strength	IS 5147	kg/m ²	> 200
Elongation at Break	IS 5147	%	> 350
Puncture Resistance	IS 15351-2015	N	> 300
Tear Resistance	IS 15351-2015	N	> 120
Resistance to Water Pressure	IS 15351-2015	kg/cm ²	> 10
Peel Adhesion to concrete	IS 15351-2015	N	> 1500
Overlap Peel Adhesion Strength (Double Sided Butyl Tape)	ASTM D1000	N	> 850
Overlap Peel Adhesion Strength (Pressure Sensitive Tape)	ASTM D1000	N	>1000
Water Absorption	---	%	<1



Thank You!

GIRIVA GROUP OF COMPANIES
312, Notus IT Park, Sarabhai
Amin Marg, Genda Circle
Vadodara - 390007

IMPORTANT NOTE: As these products are manufacturing from second generation composite plastics. All these test parameters may vary.

NOTE: Anchor grip membrane is itself water impermeable. However, the effectiveness of waterproofing is solely depends upon the site condition and effective workmanship of application.

STORAGE CONDITIONS: The membranes must be vertically stacked and stored in a shaded area covered by a thick fabric and tied securely in a manner that will minimize exposure to sunlight. The membranes to be stored in dry conditions below +40°C temperatures.